

EGE
UNIVERSITY

WELCOME TO

İZMİR!



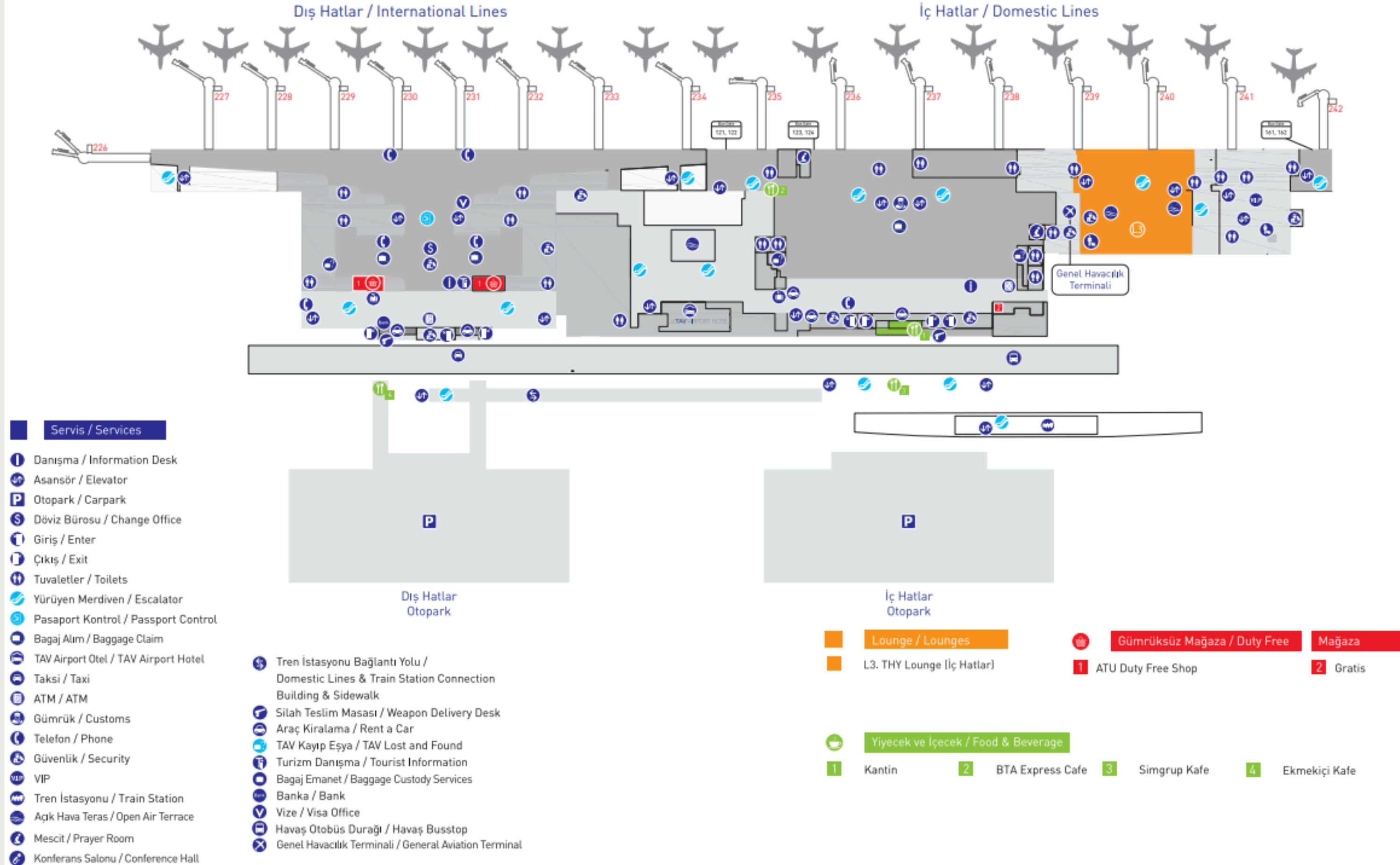


Your journey starts in Adnan Menderes Airport!



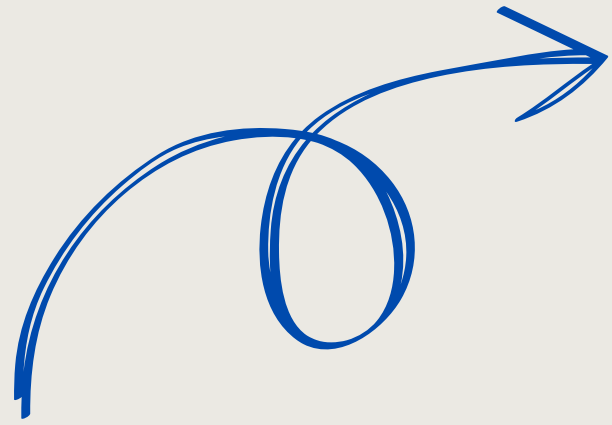
Izmir Adnan Menderes Havalimani / İç & Dış Hatlar Terminali - Gelen Yolcu Katı İzmir

Adnan Menderes Airport / Domestic & International Terminal - Arrival Level





After you arrived



**EXCHANGE YOUR
MONEY**

*FOR INTERNATIONAL
ARRIVALS*

Travelex Change Office

Location of Change Office is
after Pasaport Control, in
arrivals floor baggage claim
hall!

Tel:0 232 273 77 60

OR

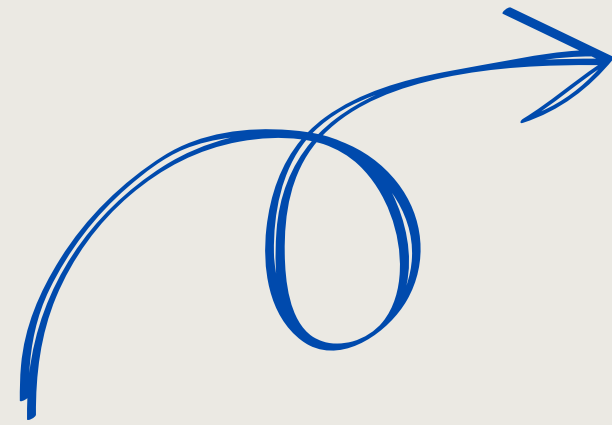
Denizbank A.Ş.

It is a Turkish bank that
offers exchange. It is located
to International arrivals floor
land side!

Tel:0 232 220 40 05

Those arriving on domestic transfer flights are highly recommended to exchange their money at the international arrival airport!

To Arrive EGE UNIVERSITY



TRANSPORTATION
OPTIONS!

!!!In order to benefit from **all vehicles** in the public transportation system in Izmir, you must purchase a disposable card ticket called **Bilet35** for 3 (100 TL) – 5 (150 TL) and 10 (270 TL) rides on your first trip. After you came



At the airport; You can buy and top up your card from the **SİMKART BÜFE** at the airport 7/24.

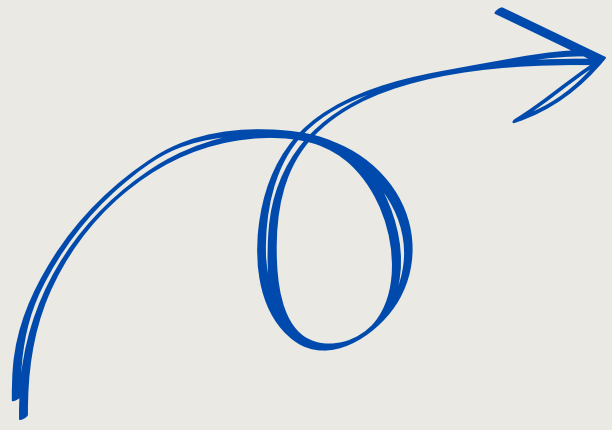
Only 3 boarding pass tickets can be purchased from **filling machines**; It is **not possible** to use the **Izban line** with the amount in this card.

!!!The card ticket you buy from vending machines can only be used in metro and urban transportation.!!!





To Arrive EGE UNIVERSITY DORMITORY



TRANSPORTATION OPTIONS!

İZBAN-METRO

*You can reach it via the moving walkway by following the 'Metro-Izban' signs at the arrivals level of the International Terminal. You **must** change IZBAN to İzmir Metro from Hilal station!!

Metro operates at 06.00-00.00!!

1. You need to take the train towards Menemen/Aliağa.
2. Get off at **Hilal** Station and transfer to the İzmir Metro.
3. Board the metro heading towards Evka 3 and get off at the **Bornova** station.

You can find out the timetables of İZBAN that suit you from the link here.

<https://www.izban.com.tr/Sayfalar/SeferSaatleri.aspx?MenuId=24>

1.

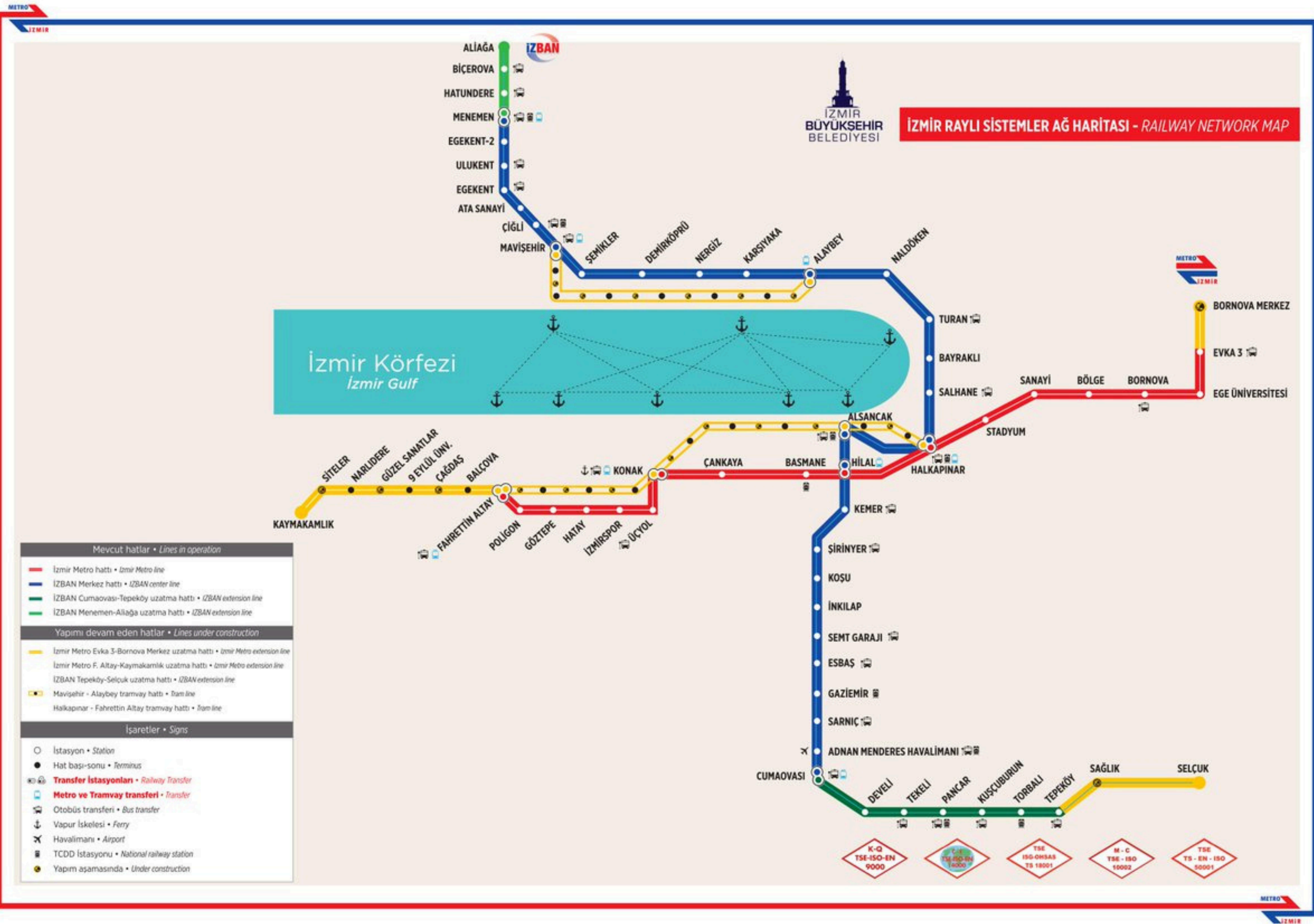


2.



3.







HAVALİMANI
Kalkış

05:40
06:40
07:50
09:00
10:10
11:20
12:40
13:40
14:40
15:40
16:50
18:00
19:10
20:20
21:40
22:40
23:40
00:40
01:40
03:40

→
departure
times from
İzmir Airport!

IMPORTANT

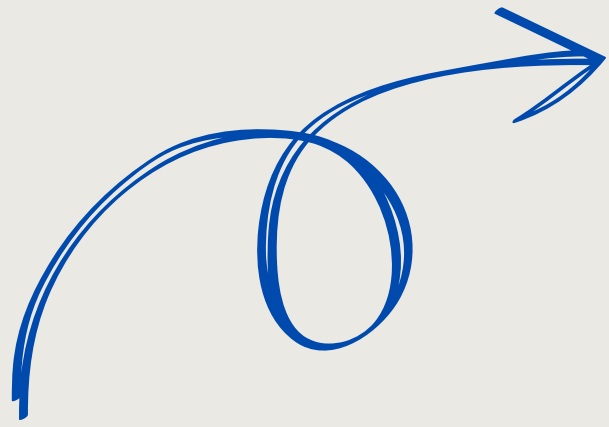
***Since Izban and Metro operate at 06.00-00.00, here are alternatives for those who will arrive at night:**

- City Bus --> **204**

You can get on from the airport and get off at the last stop, Bornova Metro.

It's very close to the university from here!
You can walk or take a taxi to Student Village at midnight!

To Arrive EGE UNIVERSITY DORMITORY



TRANSPORTATION
OPTIONS!



IMPORTANT

***Since Izban and Metro do not operate at night, here are alternatives for those who will arrive at night:**

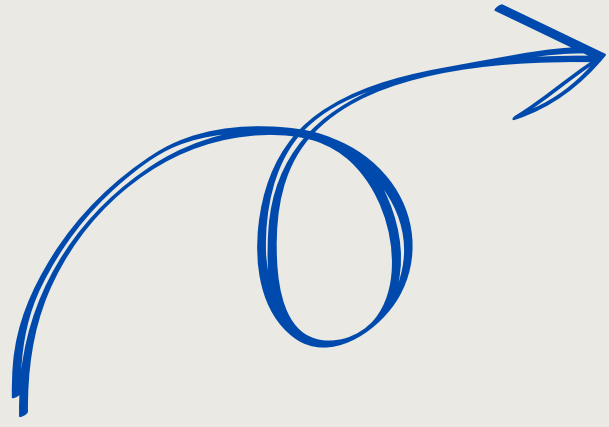
- **TAXI** --> You can get taxi service at the terminal exit of the arrivals floor of domestic/international terminals.

Opening fee: 90 TL

Fee per kilometer: 30 TL

!!!The distance is around 30–35 km from airport to university.

To Arrive EGE UNIVERSITY DORMITORY



TRANSPORTATION
OPTIONS!



IMPORTANT

***Since Izban and Metro do not operate at night, here are alternatives for those who will arrive at night:**

- Havaş Buses --> Havaş Bus fares vary depending on the route.(110 TL)

Departure times for Alsancak direction, and get off **Alsancak Efes Oteli**. After that, you need to take a taxi (around 12 km).

01:30

02:30

08:30

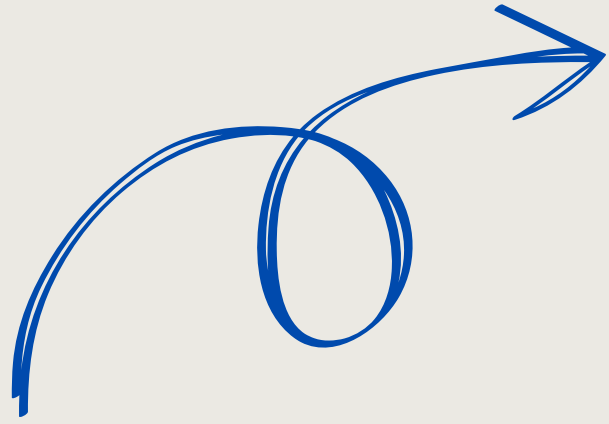
10:00

11:30

17:30

19:30

To Arrive EGE UNIVERSITY DORMITORY



TRANSPORTATION
OPTIONS!

WELCOME TO



EDGE UNIVERSITY

